

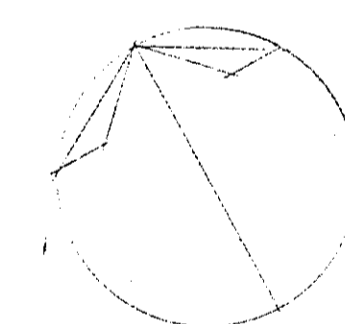
BOX # 1
 Plan Description
 ALMONTE PUBLIC
 LIBRARY 1995

Julian Smith & Associates
 ARCHITECTS

APPLINGTON GENERAL STORE
 R.R. #3 ALMONTE, ONTARIO N0A 1A0
 TEL: 613-287-8525
 FAX: 613-287-8131

DRAWING LIST

- ARCHITECTURAL
 A-1 SITE PLAN
 A-2 FLOOR PLAN
 A-3 FLOOR PLAN / WEST WING
 A-4 FLOOR PLAN / EAST WING
 A-5 ELEVATIONS / WEST WING
 A-6 ELEVATIONS / EAST WING
 A-7 SECTIONS / WEST WING
 A-8 SECTIONS / EAST WING
 A-9 DETAILS
- STRUCTURAL
 S-1 TYPICAL DETAILS
 S-2 FOUNDATION PLAN
 S-3 ROOF PLAN
 S-4 SECTIONS
- MECHANICAL
 M-1 PLUMBING & DRAINAGE
 M-2 HEATING & AIR CONDITIONING
- ELECTRICAL
 E-1 DEMOLITION
 E-2 LIGHTING, POWER, SYSTEMS
 E-3 LIGHTING, POWER, SYSTEMS



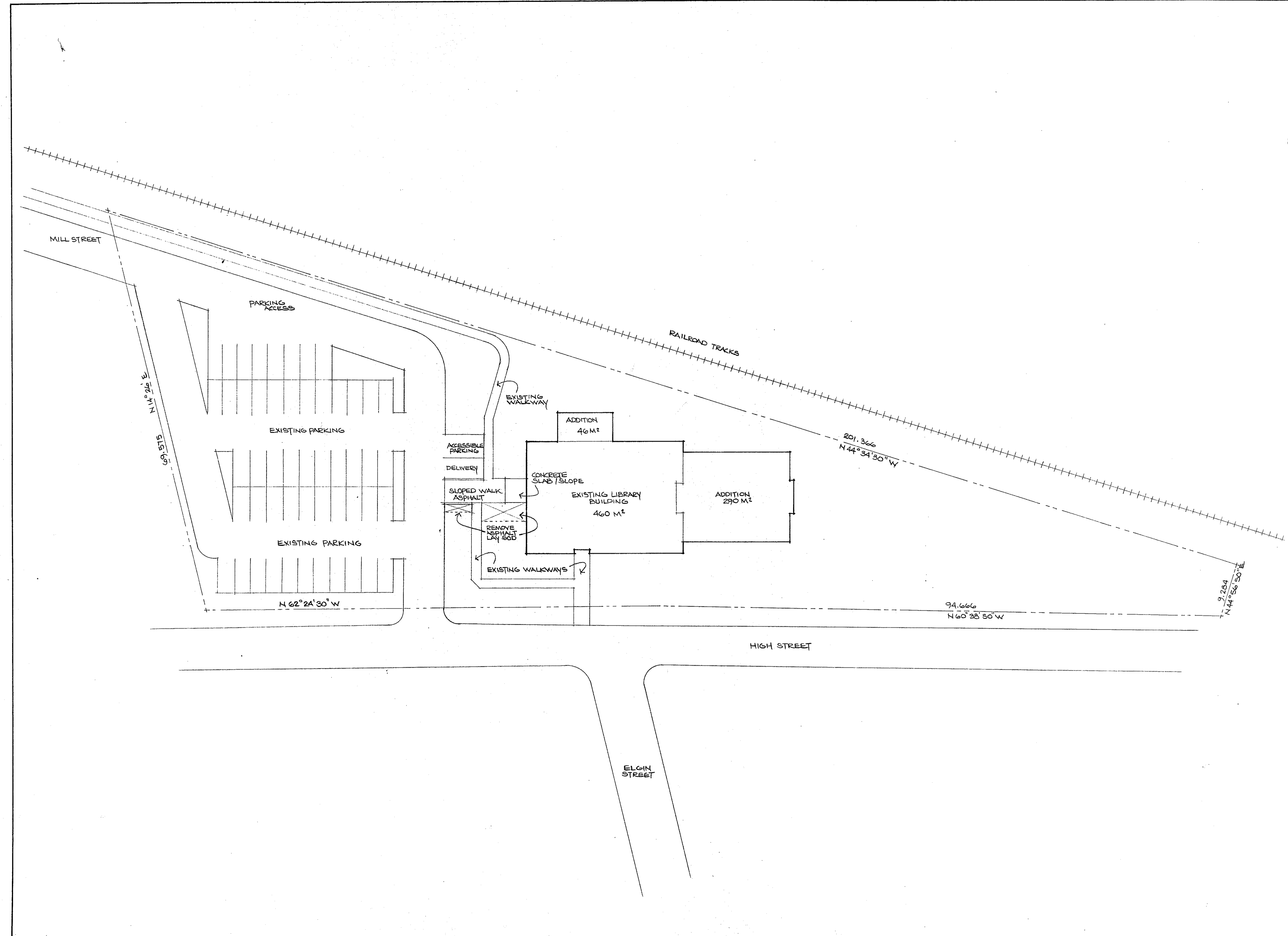
ALMONTE PUBLIC LIBRARY

ADDITIONS AND ALTERATIONS

ALMONTE, ONTARIO

Site Plan

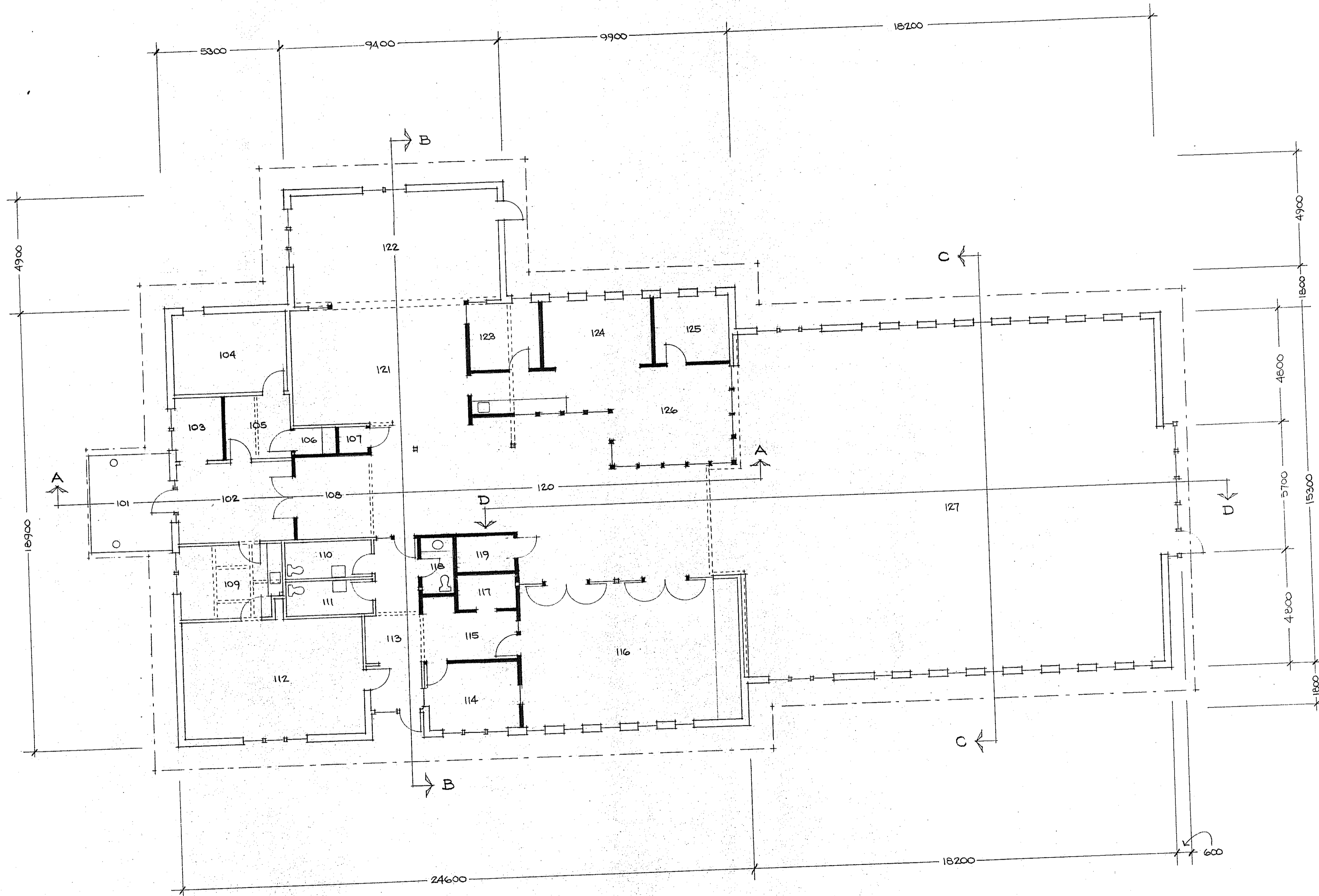
Date:	July 1995	Drawing No.	A.1
Drawn:	L. Gaines		
Scale:	1/300		



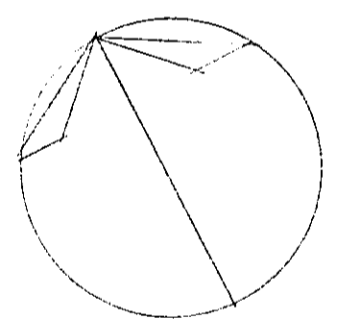


Julian Smith & Associates
ARCHITECTS

APPLETON GENERAL STORE
R.R. #3 ALMONTE, ONTARIO, K0A 1A0
TEL. 813-237-4555
FAX. 813-237-8131



- 101 Entrance Canopy
- 102 Library Foyer
- 103 Cloakroom
- 104 Mechanical Room #1
- 105 Library Storage
- 106 Janitor's Room
- 107 Active Storage
- 108 Reception
- 109 Classroom
- 110 Men's Washroom
- 111 Women's Washroom
- 112 Activity Room
- 113 School Foyer
- 114 School Office
- 115 Hallway
- 116 Meeting Room
- 117 School Storage
- 118 Washroom
- 119 Mechanical Room #2
- 120 Orientation Room
- 121 Children's Books
- 122 Children's Reading Rm.
- 123 Assistant Librarian
- 124 General Office
- 125 Librarian's Office
- 126 Conference Room
- 127 Reading Room



**ALMONTE PUBLIC
LIBRARY**

ADDITIONS AND ALTERATIONS

ALMONTE, ONTARIO

Floor Plan

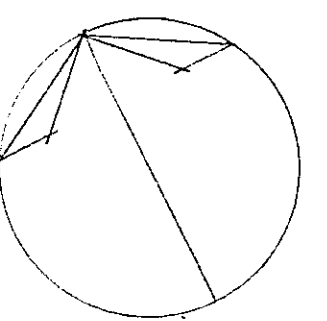
INDICATING REMOVALS AND ADDITIONS
+-----+

Date:	July 1995	Drawing No.
Drawn:	L.Gaines	A.2
Scale:	1/100	



Julian Smith & Associates
ARCHITECTS

APPLETON GENERAL STORE
R.R. #3, ALMONTE, ONTARIO, K6A 1A0
TEL: 613-237-4555
FAX: 613-237-8131



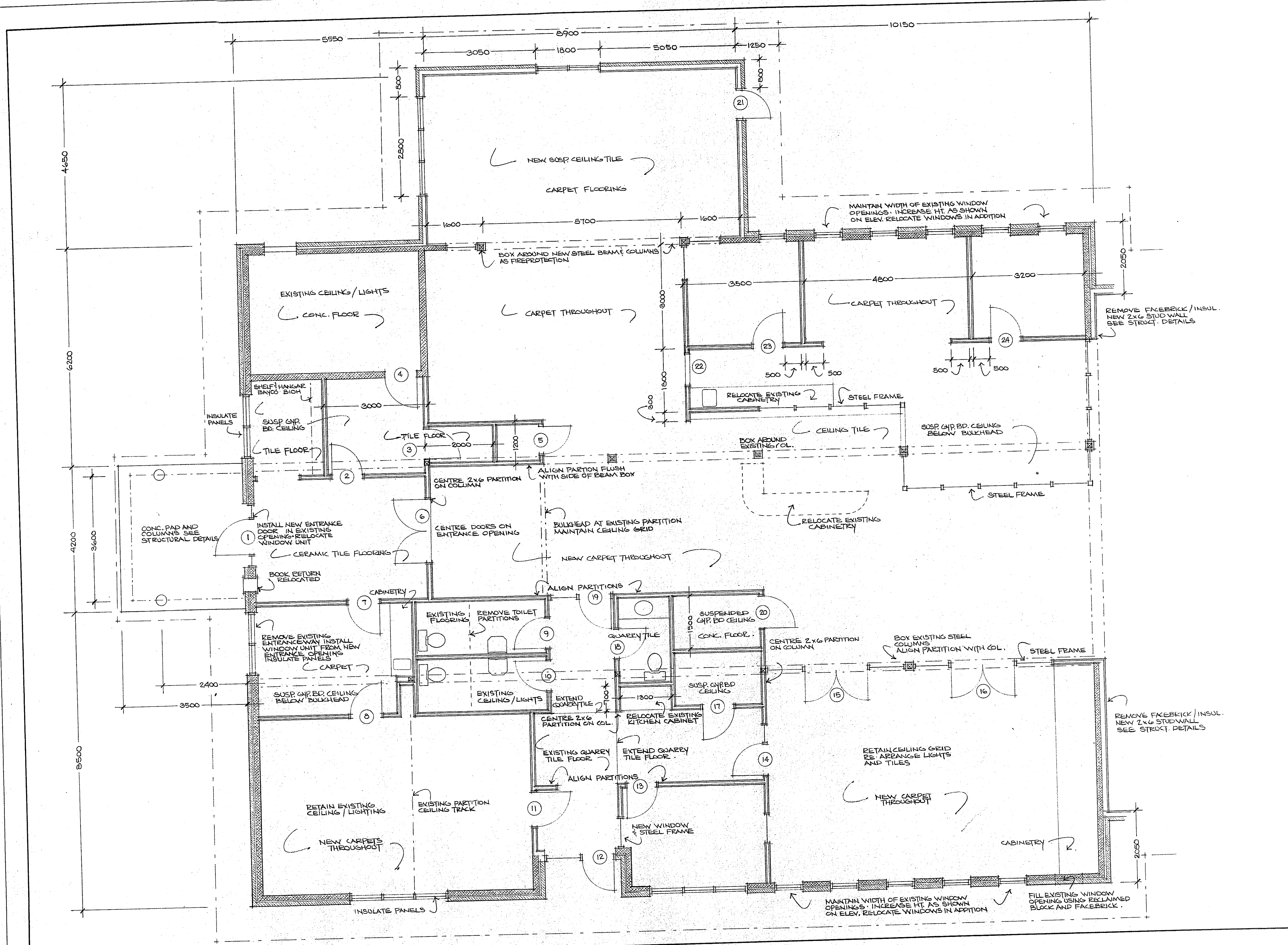
ALMONTE PUBLIC
LIBRARY

ADDITIONS AND ALTERATIONS

ALMONTE, ONTARIO

Floor Plan
West Wing

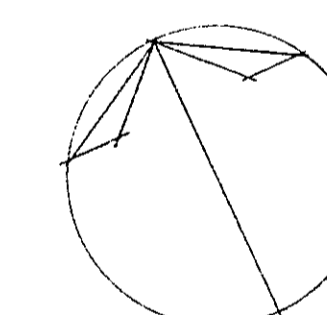
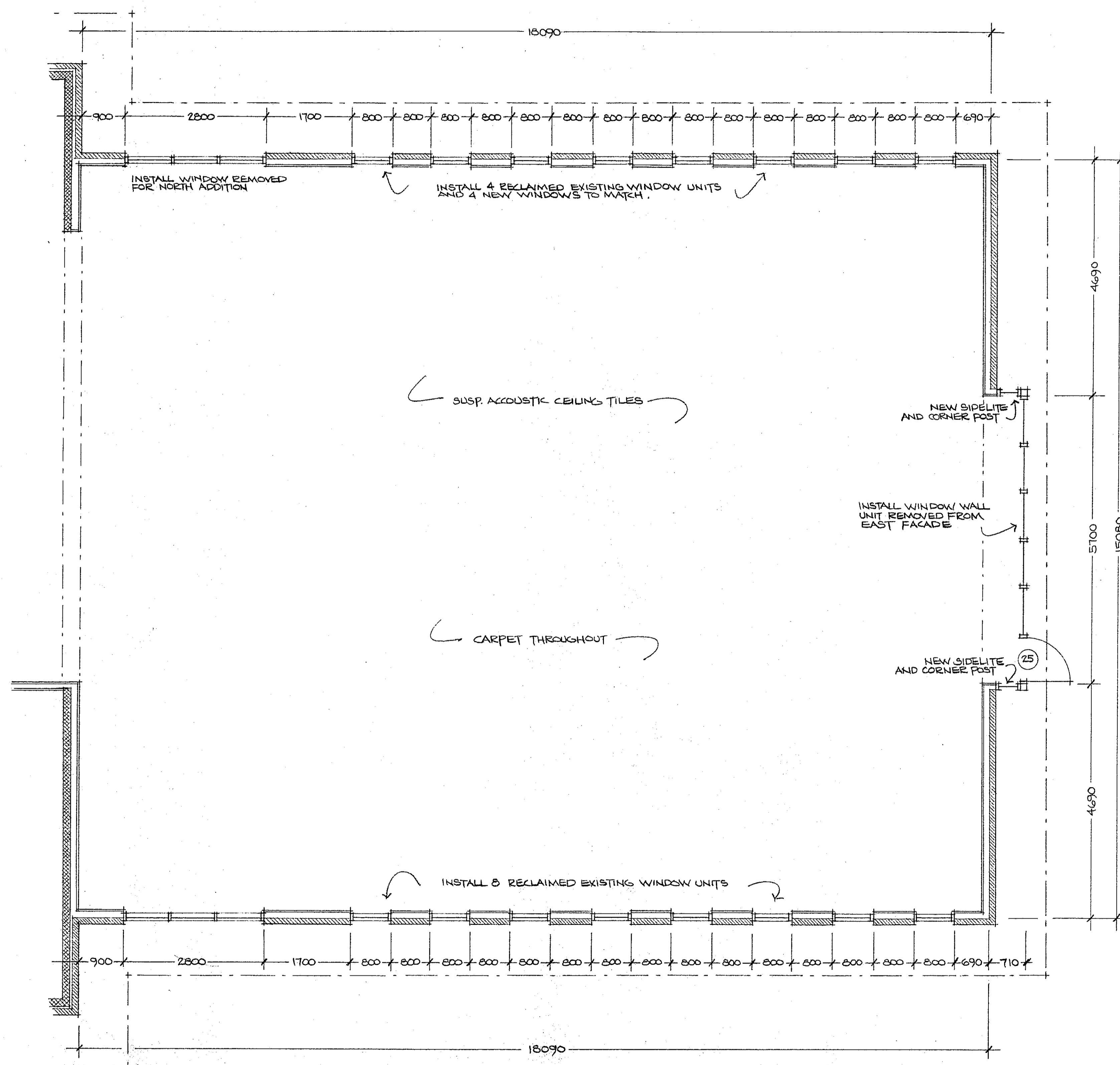
Date:	July 1995	Drawing No.
Drawn:	L.Gaines	A.3
Scale:	1/50	





Julian Smith & Associates
ARCHITECTS

APPLETON GENERAL STORE
R.R. #3, ALMONTE, ONTARIO, K0A 1A0
TEL: 613-257-4555
FAX: 613-257-8131



ALMONTE PUBLIC
LIBRARY

ADDITIONS AND ALTERATIONS

ALMONTE, ONTARIO

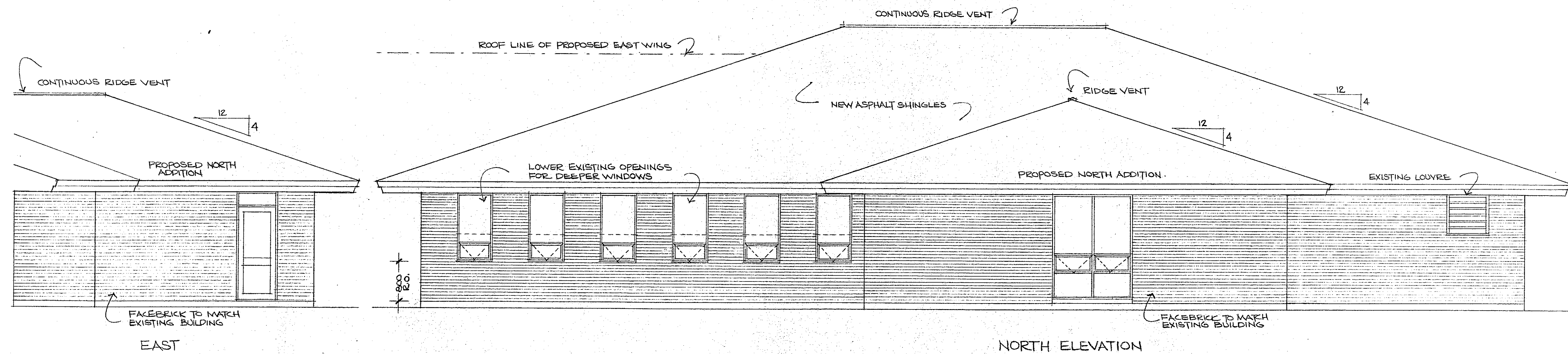
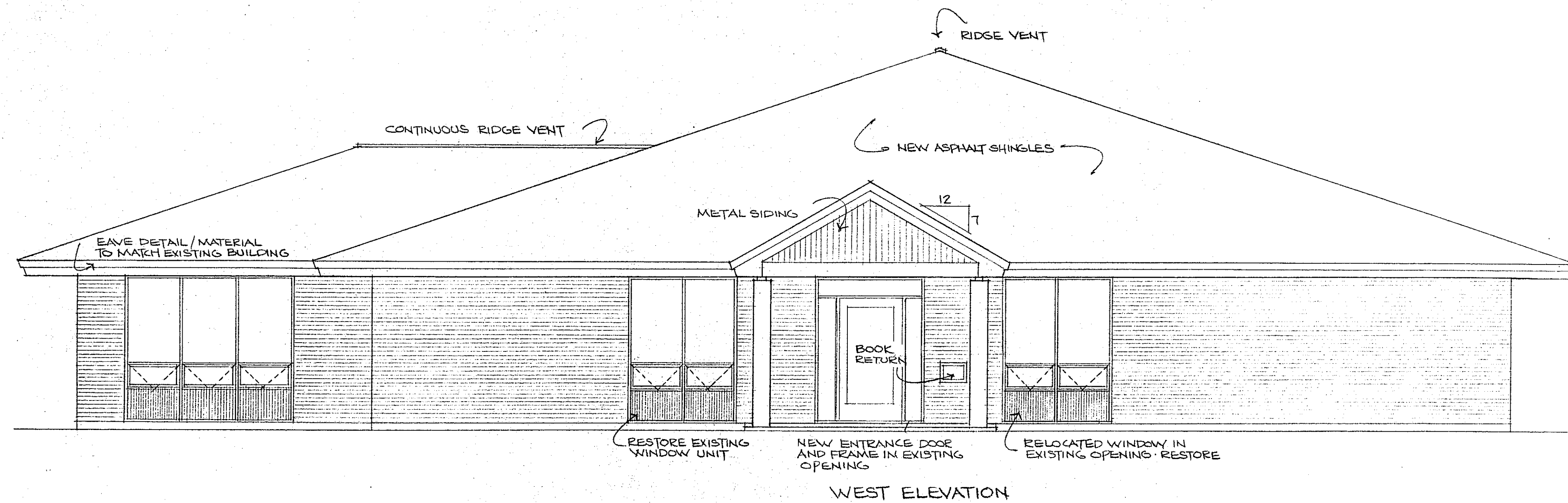
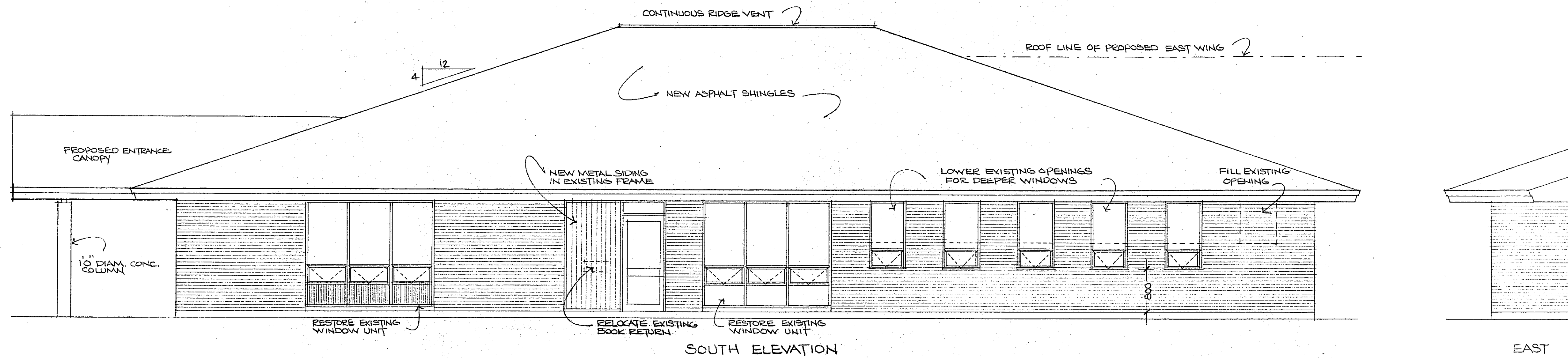
Floor Plan
East Wing

Date:	July 1995	Drawing No.
Drawn:	L.Gaines	A.4
Scale:	1/50	



Julian Smith & Associates
ARCHITECTS

APPLETON GENERAL STORE
R.R. #3, ALMONTE, ONTARIO K0A 1A0
TEL: 613-257-4555
FAX: 613-257-5131



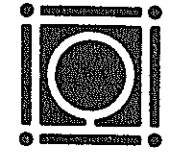
ALMONTE PUBLIC
LIBRARY

ADDITIONS AND ALTERATIONS

ALMONTE, ONTARIO

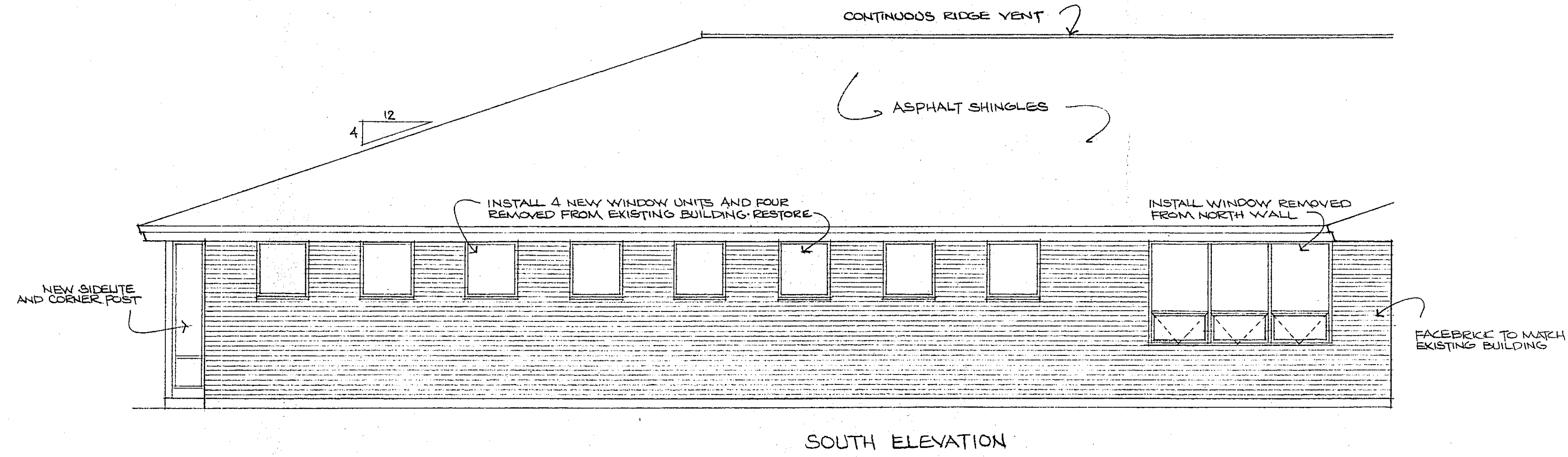
Elevations
West Wing

Date:	July 1995	Drawing No.
Drawn:	L.Gaines	A.5
Scale:	1/50	

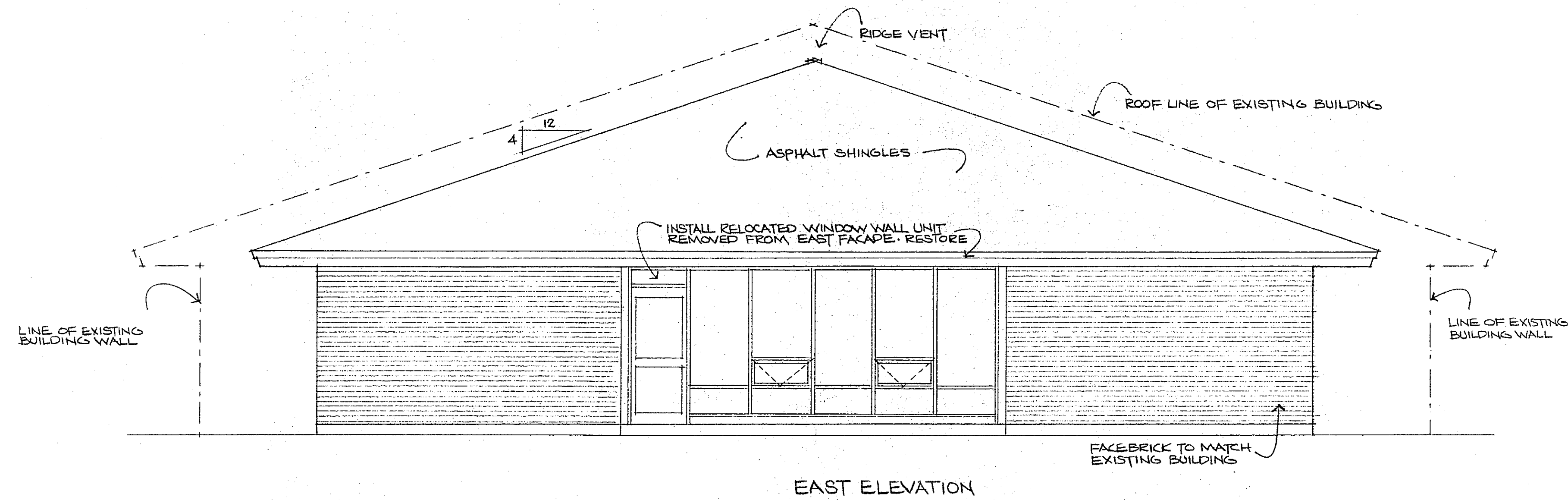


Julian Smith & Associates
ARCHITECTS

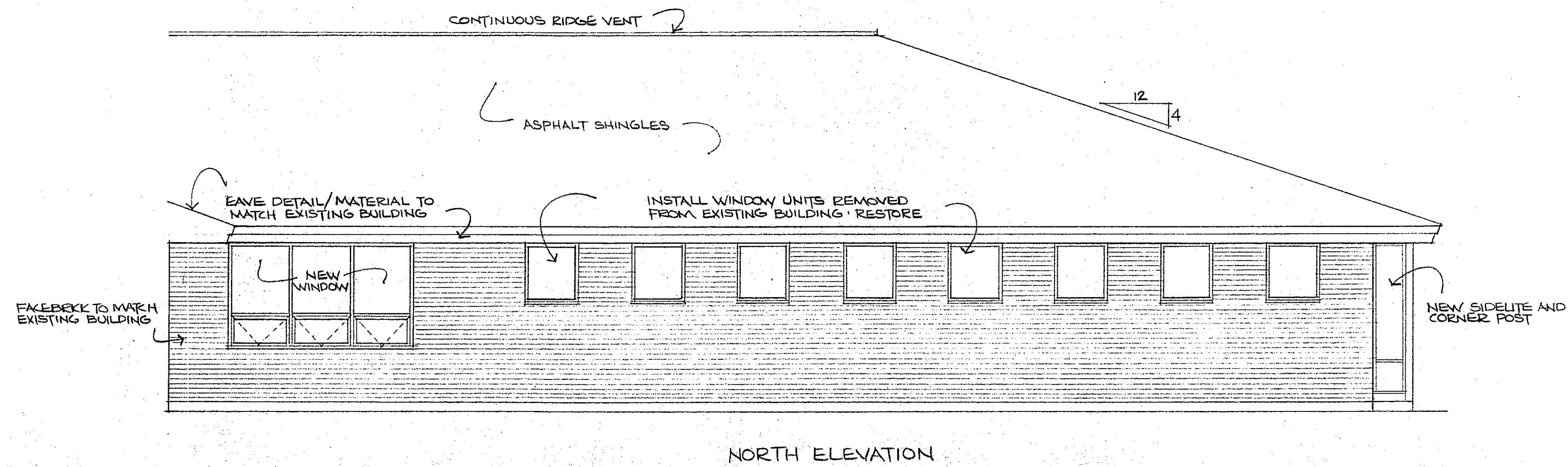
APPLETON GENERAL STORE
R.R. #3, ALMONTE, ONTARIO K0A 1A0
TEL: 613-257-4555
FAX: 613-257-8131



SOUTH ELEVATION



EAST ELEVATION



NORTH ELEVATION

ALMONTE PUBLIC
LIBRARY

ADDITIONS AND ALTERATIONS

ALMONTE, ONTARIO

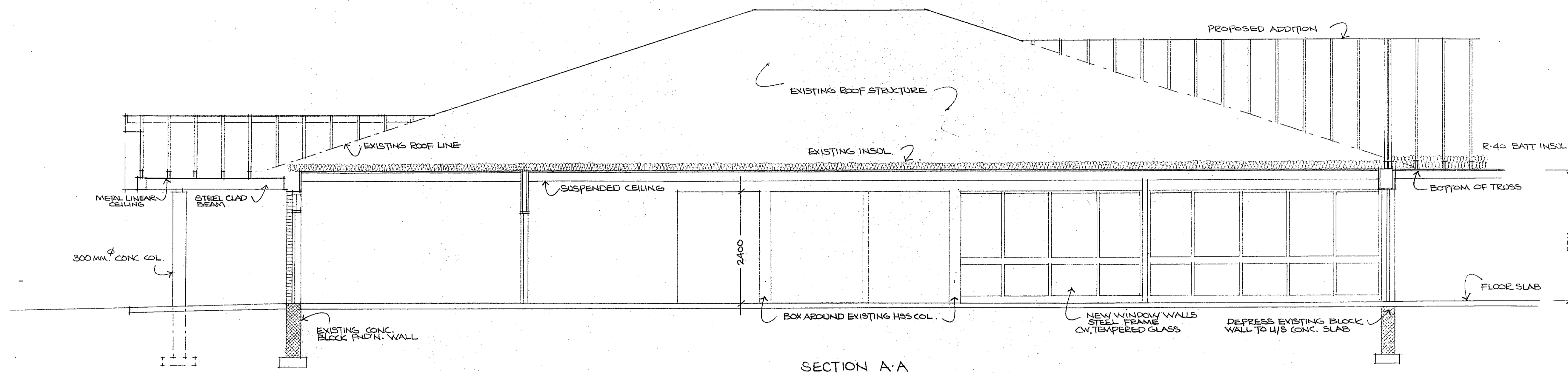
Elevations
East Wing

Date: July 1995	Drawing No.
Drawn: L.Gaines	A.6
Scale: 1/50	

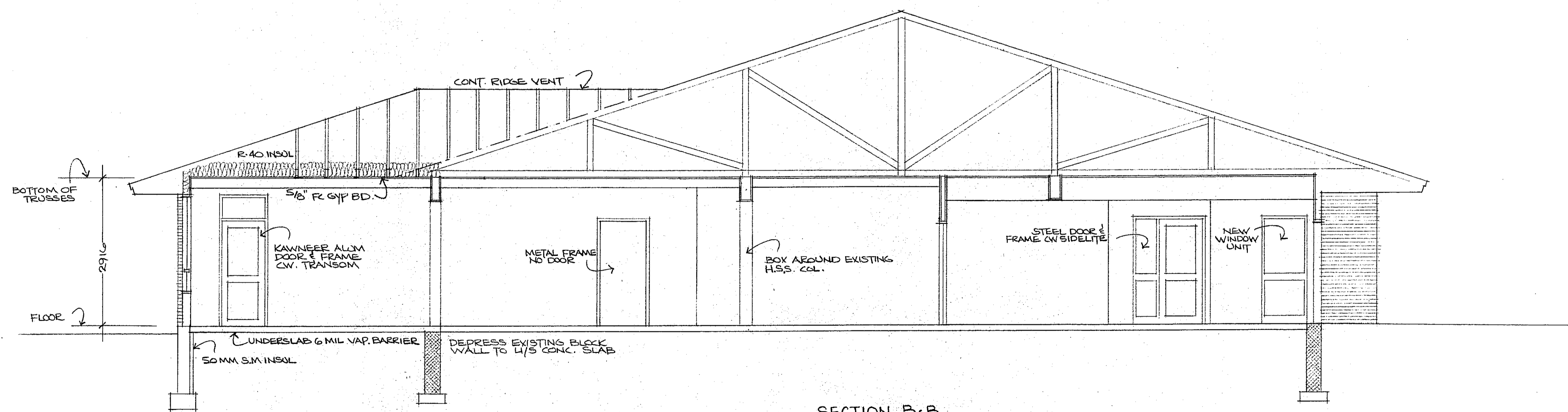


Julian Smith & Associates
ARCHITECTS

APPLETON GENERAL STORE
R.R. #3, ALMONTE, ONTARIO K0A 1A0
TEL: 813-257-4555
FAX: 813-257-8131



SECTION A-A



SECTION B-B

ALMONTE PUBLIC
LIBRARY

ADDITIONS AND ALTERATIONS

ALMONTE, ONTARIO

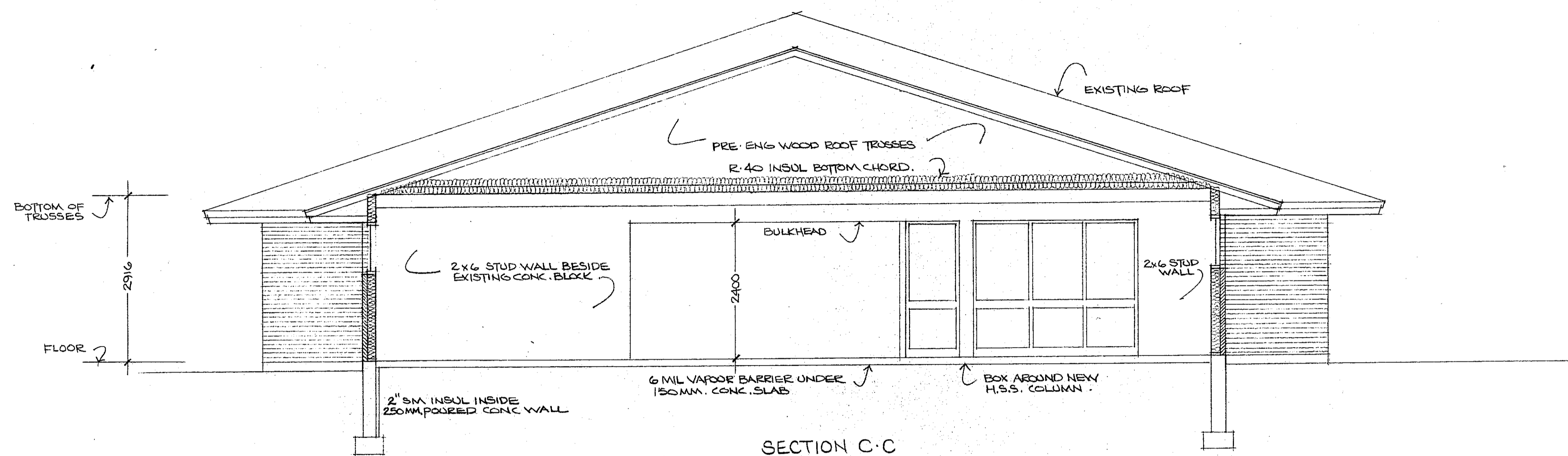
Sections
West Wing

Date:	July 1995	Drawing No.
Drawn:	L.Gaines	A.7
Scale:	1/50	

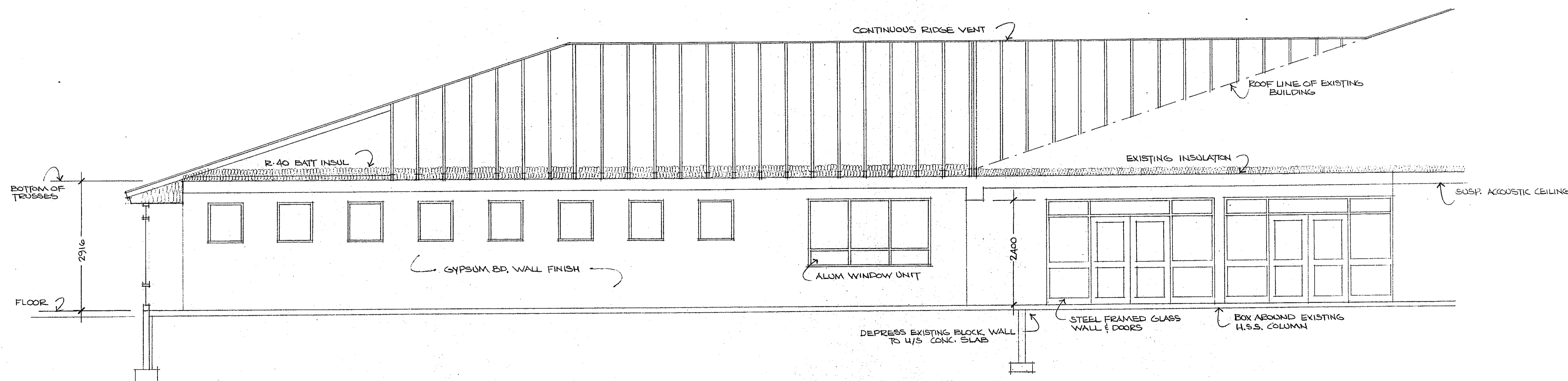


Julian Smith & Associates
ARCHITECTS

APPLETON GENERAL STORE
P.O. BOX 100, ALMONTE, ONTARIO, K0A 1A0
TEL: 613-257-4555
FAX: 613-257-8131



SECTION C-C



SECTION D-D

ALMONTE PUBLIC
LIBRARY

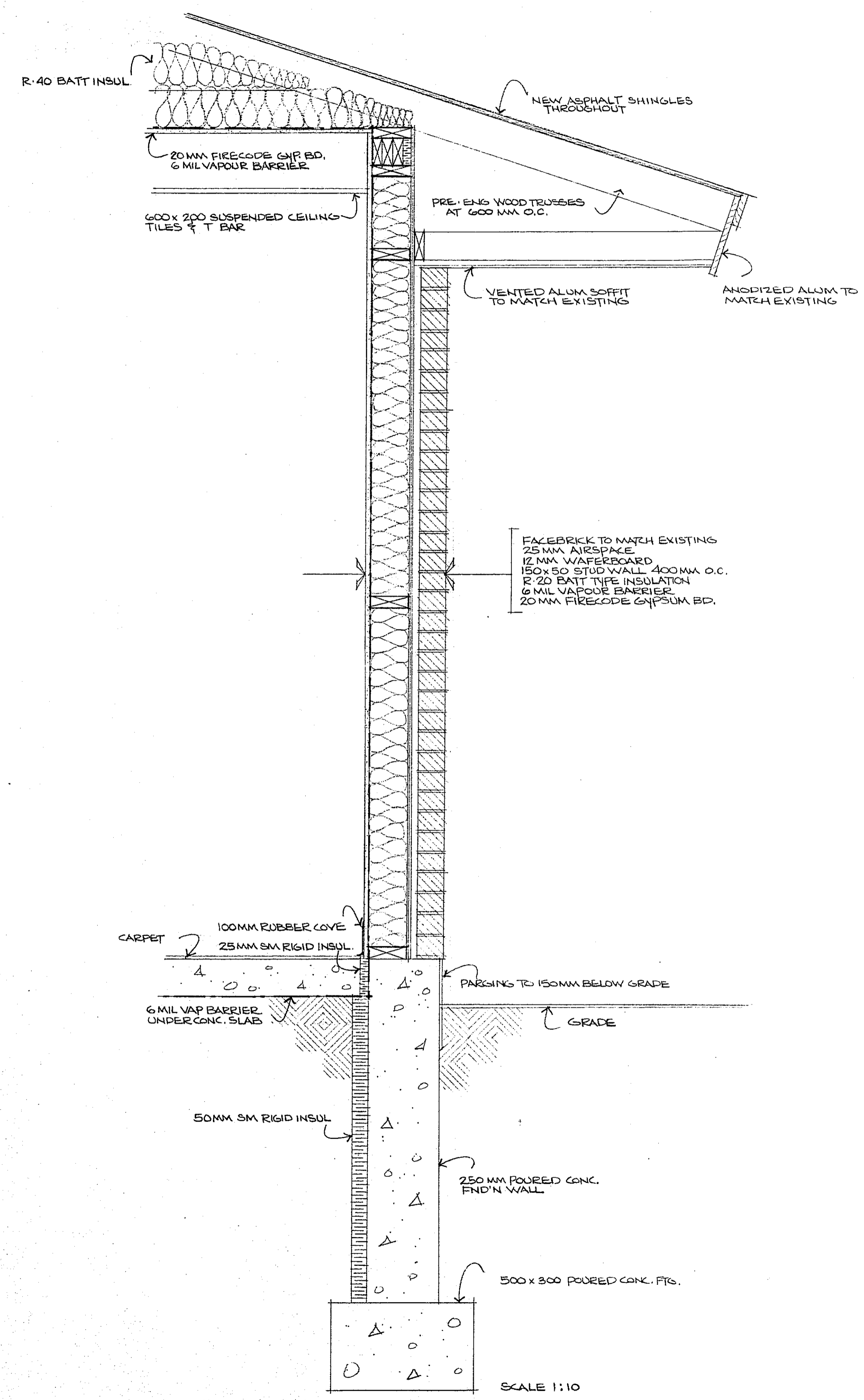
ADDITIONS AND ALTERATIONS

ALMONTE, ONTARIO

Sections
East Wing

Date:	July 1995	Drawing No.
Drawn:	L.Gaines	A.8
Scale:	1/50	

DOOR	DOOR SIZE	DOOR TYPE	FRAME	FEATURES	COMMENTS
D1	1070 x 2100 x 45	Aluminum cw glass	Aluminum frame	cw sidelites / tempered glass	Kawneer or equivalent
D2	910 x 2100 x 45	SWC birch veneer	Steel frame	cw louvre	relocated office door
D3	710 x 2100 x 45	SWC birch veneer	Steel frame		relocated janitor rm door
D4	910 x 2100 x 45	SWC birch veneer	Steel frame		existing condition
D5	810 x 2100 x 45	SWC birch veneer	Steel frame		relocated storage rm door
D6	910 x 2100 x 45	Steel door cw glass	Steel frame	double doors/tempered glass	
D7	910 x 2100 x 45	SWC birch veneer	Steel frame		
D8	910 x 2100 x 45	SWC birch veneer	Steel frame		
D9	810 x 2100 x 45	SWC birch veneer	Steel frame		existing condition
D10	810 x 2100 x 45	SWC birch veneer	Steel frame		existing condition
D11	910 x 2100 x 45	SWC birch veneer	Steel frame		existing condition
D12	910 x 2100 x 45	SWC birch veneer	Steel frame		existing condition
D13	910 x 2100 x 45	SWC birch veneer	Steel frame	cw louvre	relocated vestibule door
D14	910 x 2100 x 45	SWC birch veneer	Steel frame	cw sidelite / tempered glass	
D15	910 x 2100 x 45	Steel door cw glass	Steel frame	cw sidelites / tempered glass	
D16	910 x 2100 x 45	Steel door cw glass	Steel frame	cw sidelites / tempered glass	
D17	810 x 2100 x 45	SWC birch veneer	Steel frame		relocated storage rm door
D18	710 x 2100 x 45	SWC birch veneer	Steel frame		relocated washroom door
D19	910 x 2100 x 45	Aluminum cw glass	Aluminum frame	cw sidelite & tempered glass	relocated vestibule door
D20	910 x 2100 x 45	Steel door	Steel frame / rated		1 1/2 hr fire rated
D21	910 x 2100 x 45	Aluminum cw glass	Aluminum frame		Kawneer or equivalent
D22	910 x 2100 x 45	no door	Steel frame		
D23	910 x 2100 x 45	SWC birch veneer	Steel frame	cw louvre	relocated vestibule door
D24	910 x 2100 x 45	SWC birch veneer	Steel frame	cw louvre	
D25	910 x 2100 x 45	Aluminum cw glass	Aluminum frame		relocated exit door/glass wall




Julian Smith & Associates
 ARCHITECTS
APPLETON GENERAL STORE
 P.R. #3, ALMONTE, ONTARIO K6A 1A0
 TEL: 613-257-4555
 FAX: 613-257-8131

ALMONTE PUBLIC
LIBRARY
 ADDITIONS AND ALTERATIONS
 ALMONTE, ONTARIO

Details
 Date: July 1995 Drawing No.
 Drawn: L.Gaines
 Scale: as shown **A.9**